



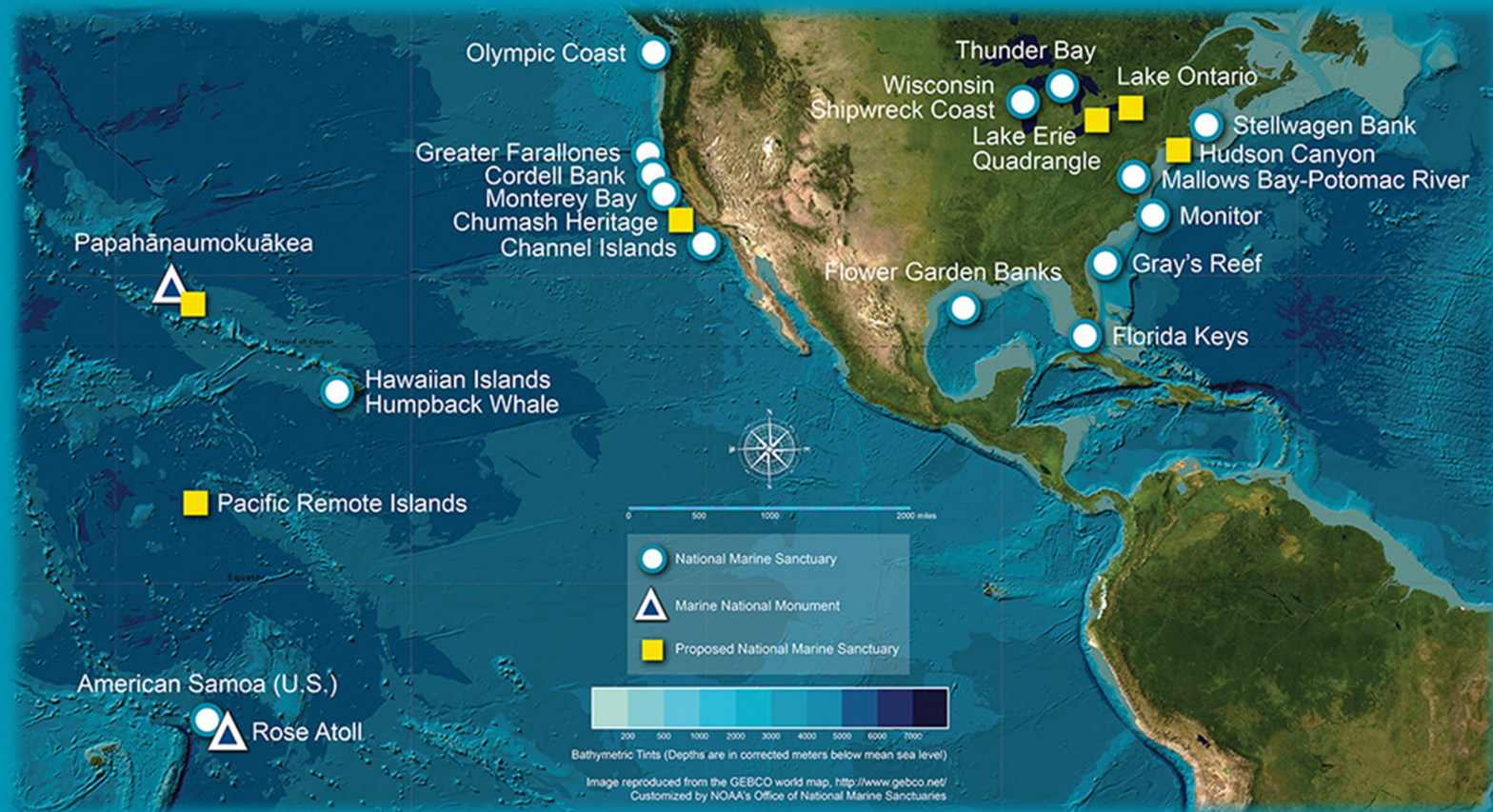
Flower Garden Banks National Marine Sanctuary

Research and Management of Remote Offshore Resources

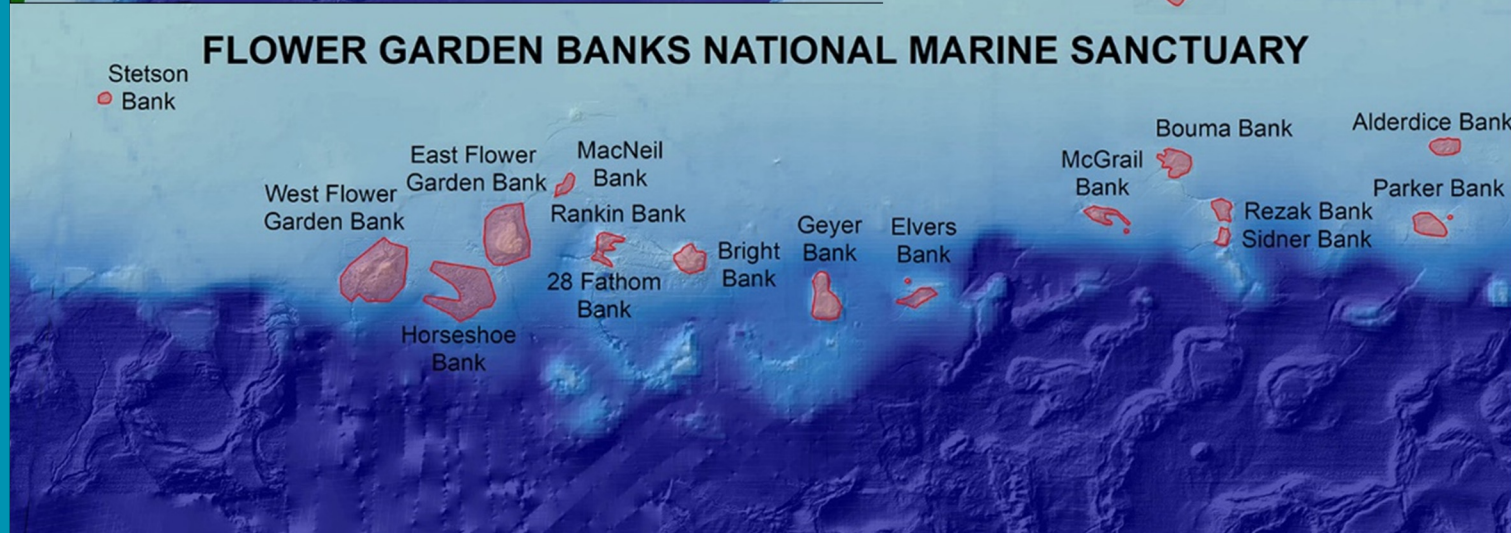
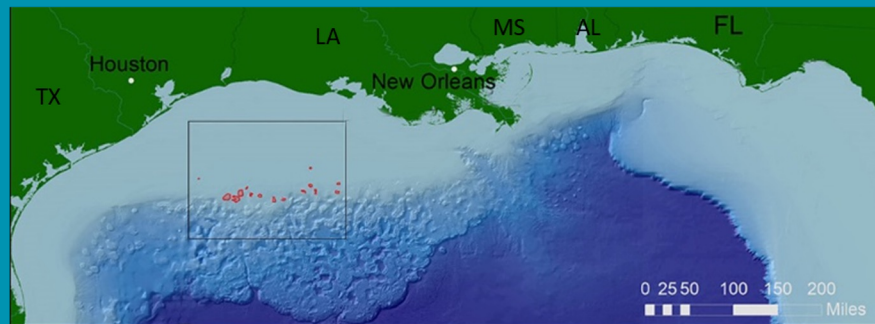
Marissa F. Nuttall

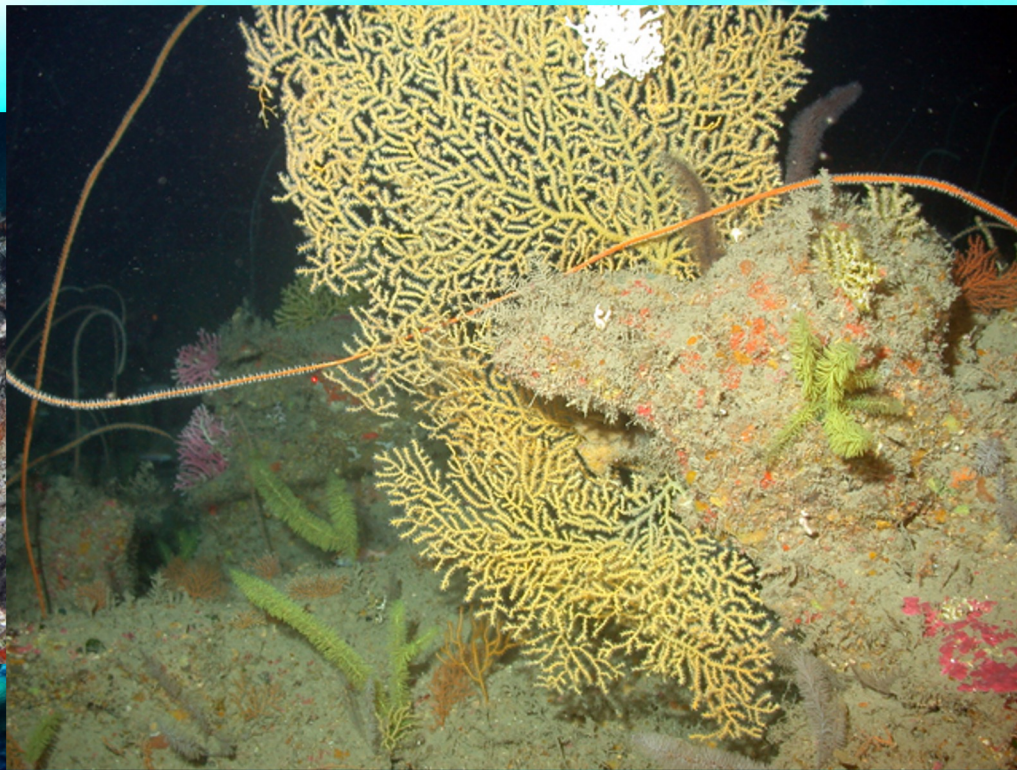
Research Specialist

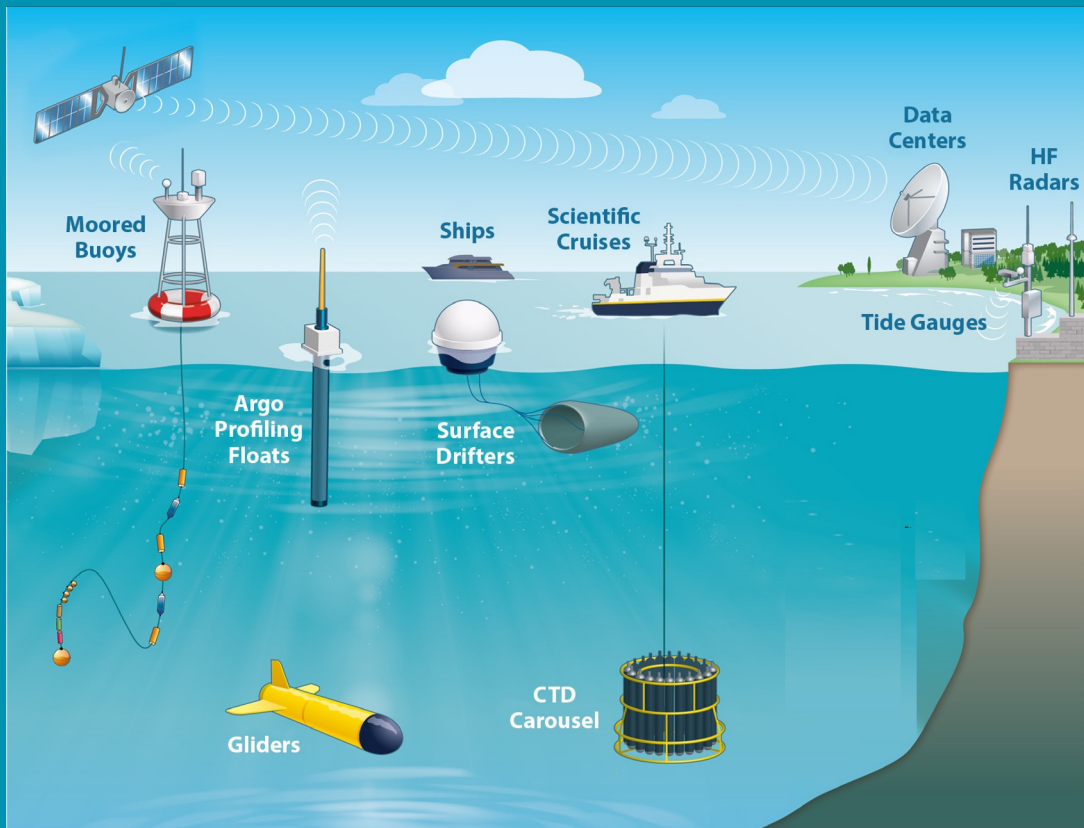
CPC, NOAA's Flower Garden Banks NMS











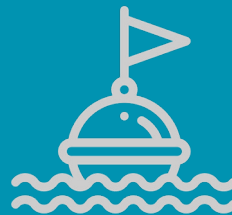
Long-term Datasets



Data Dashboards



Data Buoys



Mooring Buoys



Long-term Datasets

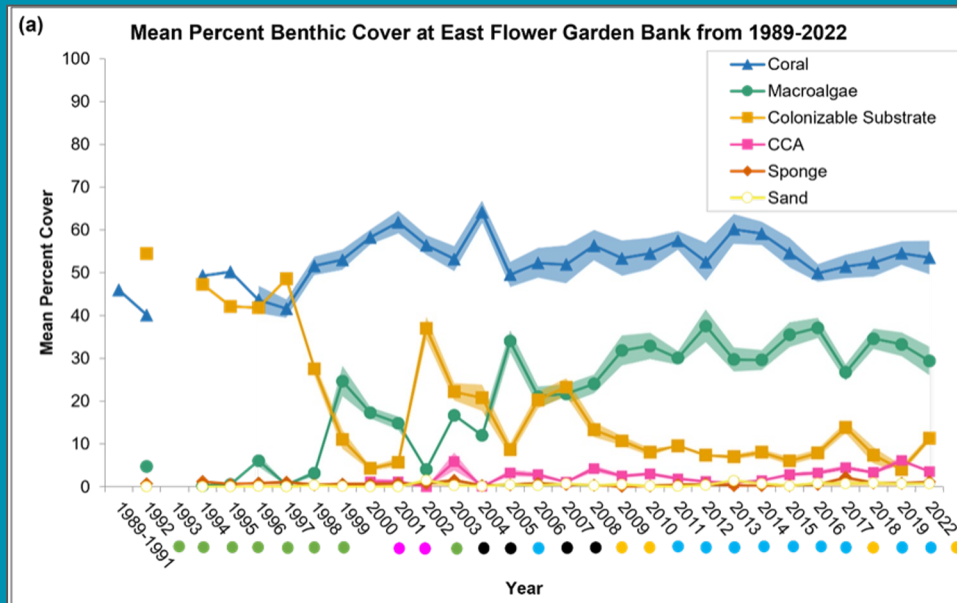
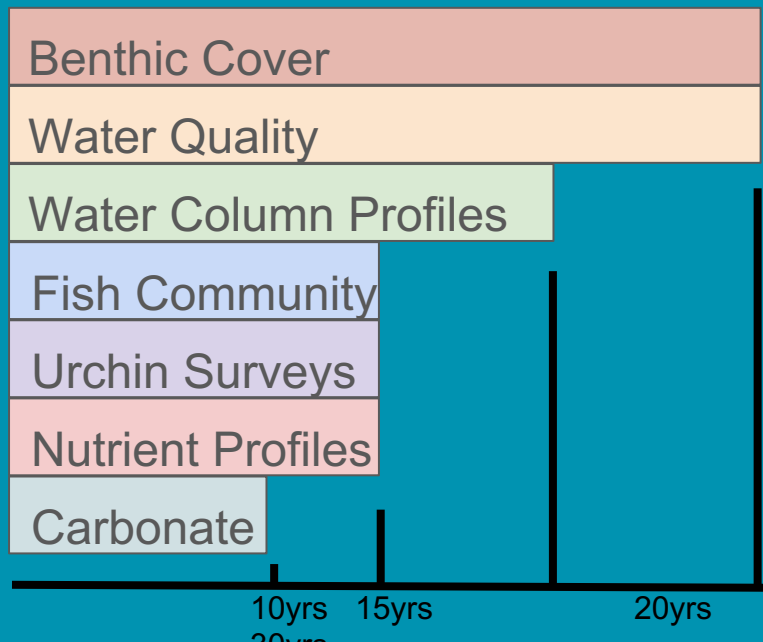


NATIONAL CENTERS FOR
ENVIRONMENTAL INFORMATION



ERDDAP

Easier access to scientific data





Data Dashboards

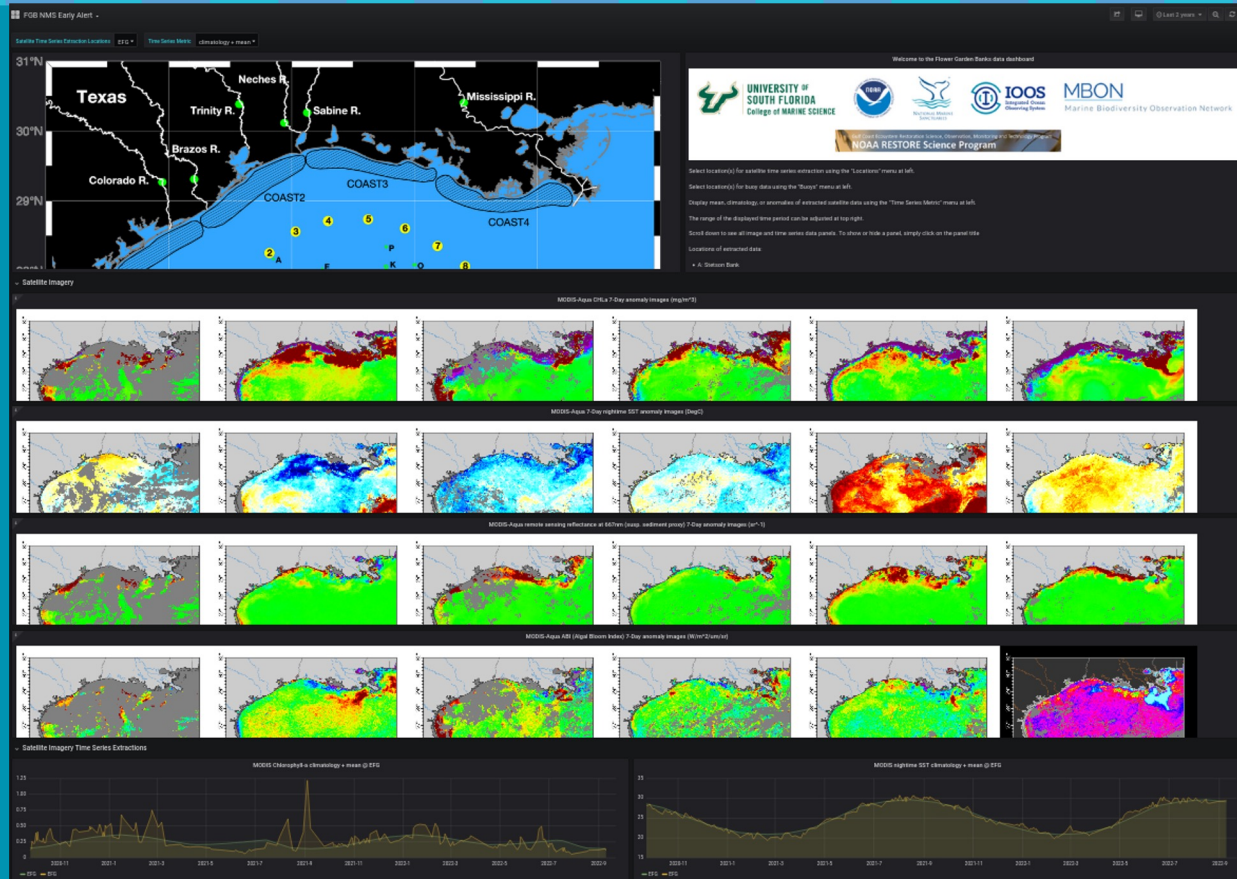
Early Alert System:

Monitoring a ring of sites around the Flower Garden Banks National Marine Sanctuary where anomalously high values of chlorophyll-a concentration, for example, can be detected from satellite imagery before reaching the reefs.



Dr. Daniel Otis

<http://fgbnms-dashboard.marine.usf.edu:3000/>





Data Dashboards

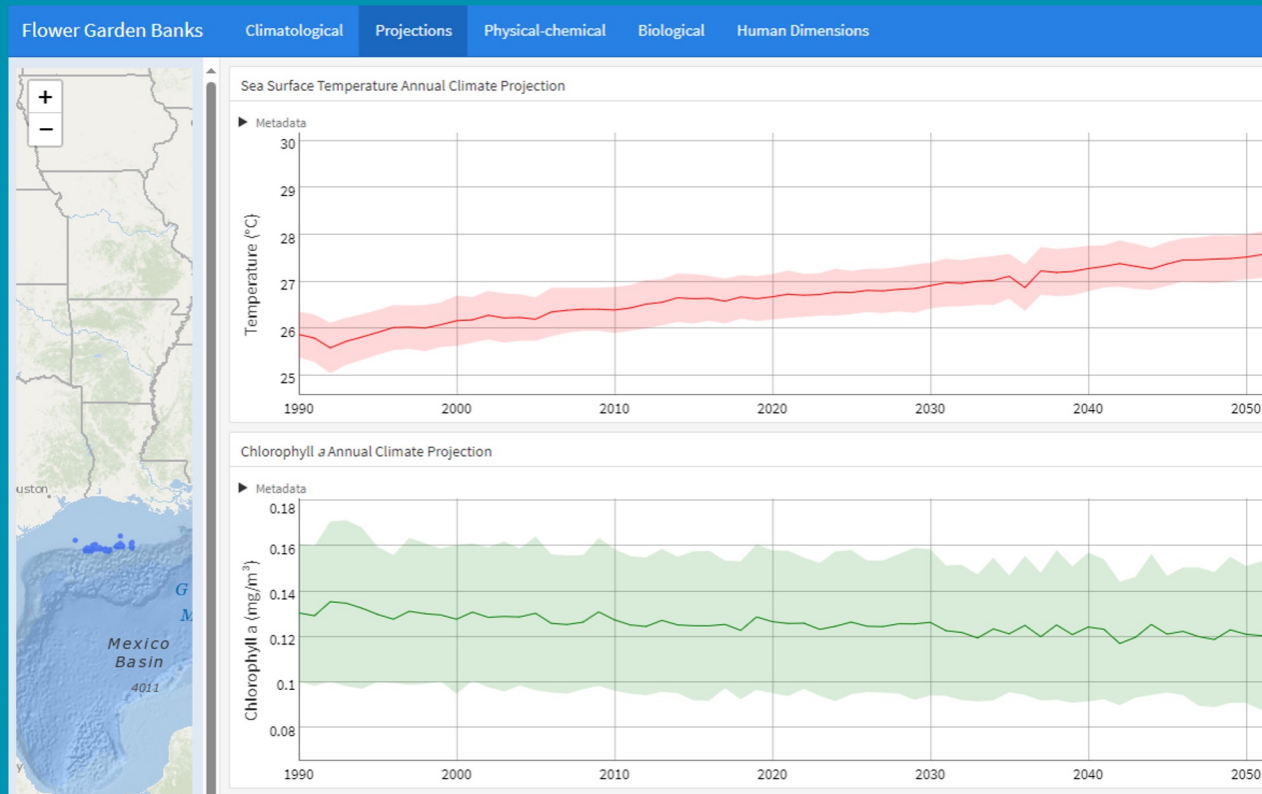
Climate Projections:

Climatology and projections of key oceanographic parameters across FGBNMS. This dashboard is underdeveloped to include biological and human dimensions.



Gretchen Luchauer

<https://noaa-onms.github.io/climate-dashboard/FGBNMS.html#climatological>





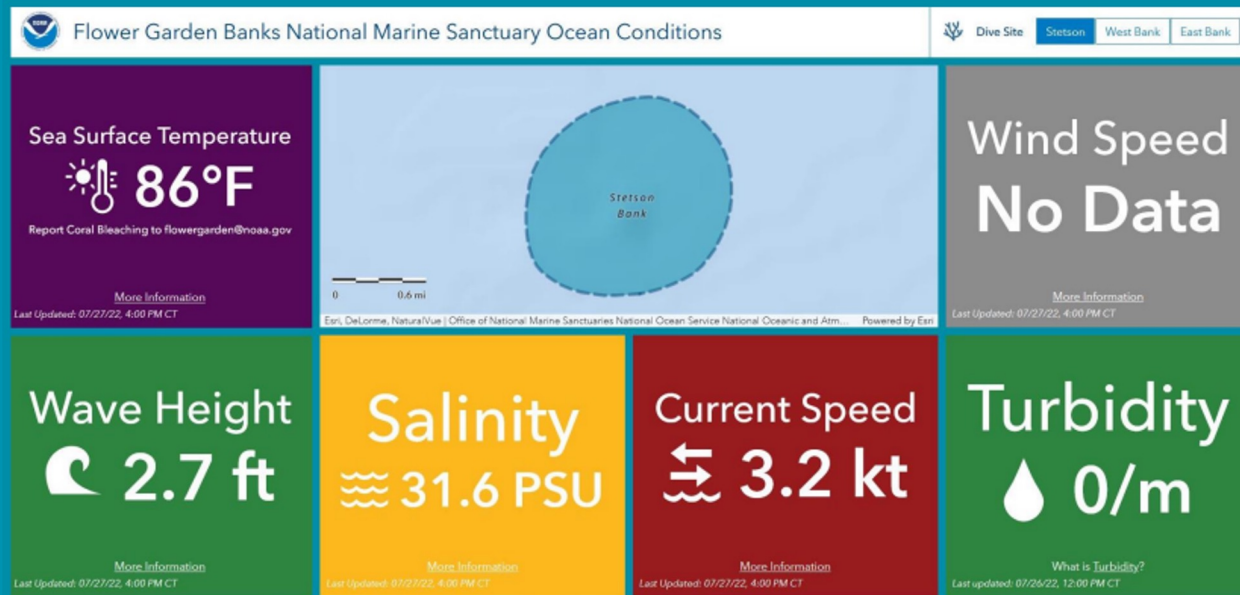
Data Dashboards

Current Conditions:

Near real-time ocean conditions stem from NOAA's ERDAAP data server to provide potential visitors a snapshot of current conditions for trip planning.



J. Keaton Thompson






Data Buoys

My Devices

East Flower Garden 'Bob'

New data received 14 minutes ago

1.14 m @ 6.8 s 6.80 m/s

| WAVE HEIGHT | | DIRECTION | PERIOD | SPREAD |
|--|------|-----------|--------|--------|
|  1.14 m | MEAN | 154 ° ➤ | 4.8 s | 55 ° |
| | PEAK | 151 ° ➤ | 6.8 s | 48 ° |

| WIND SPEED | DIRECTION | SURFACE |
|------------|-----------|---------|
| 6.80 m/s | 171 ° | choppy |

27.907700°, -93.598450°

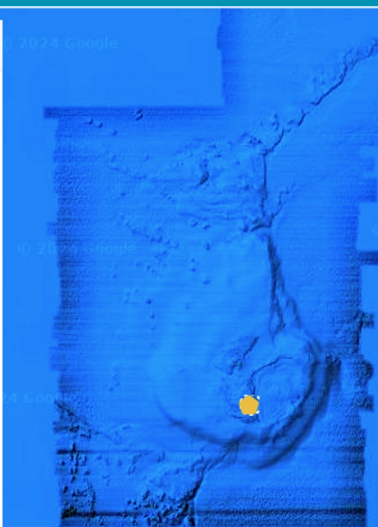
05/07/2024 22:15:31 CDT



SETTINGS



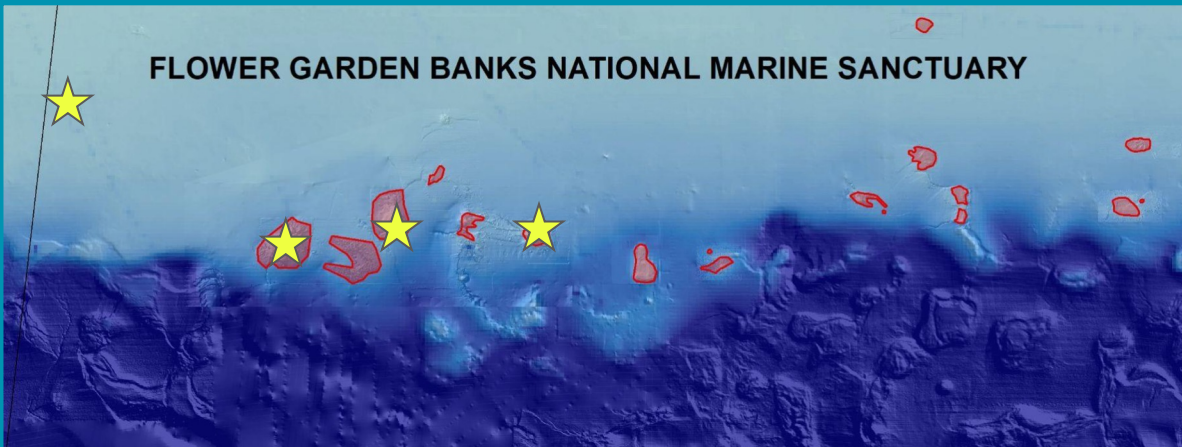
HISTORICAL DATA





Data Buoys

FLOWER GARDEN BANKS NATIONAL MARINE SANCTUARY



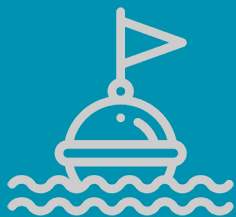
GCOOS

Data buoys for expanded
sanctuary

TAMU-CC

Bristlemouth technology dissolved
oxygen sensor

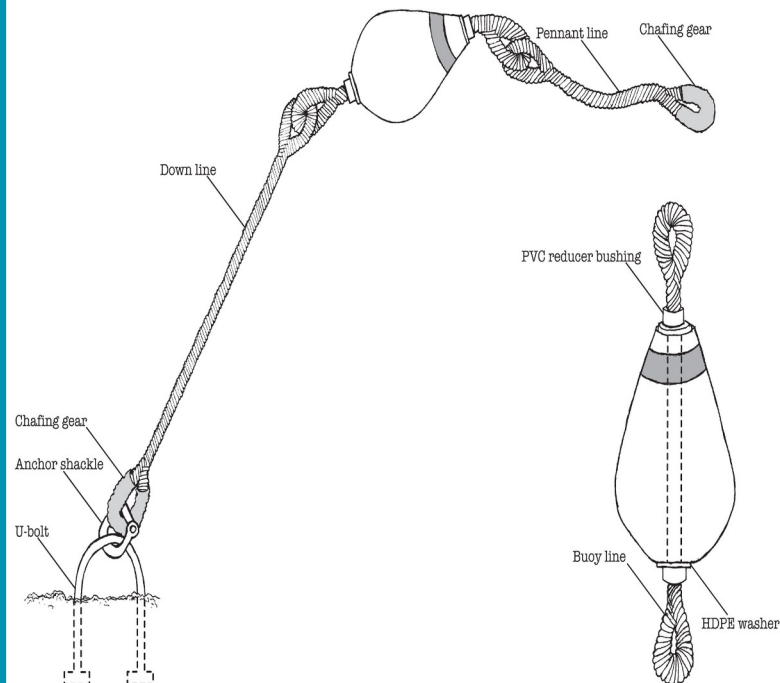


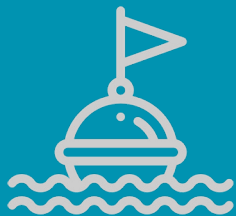


Mooring Buoys

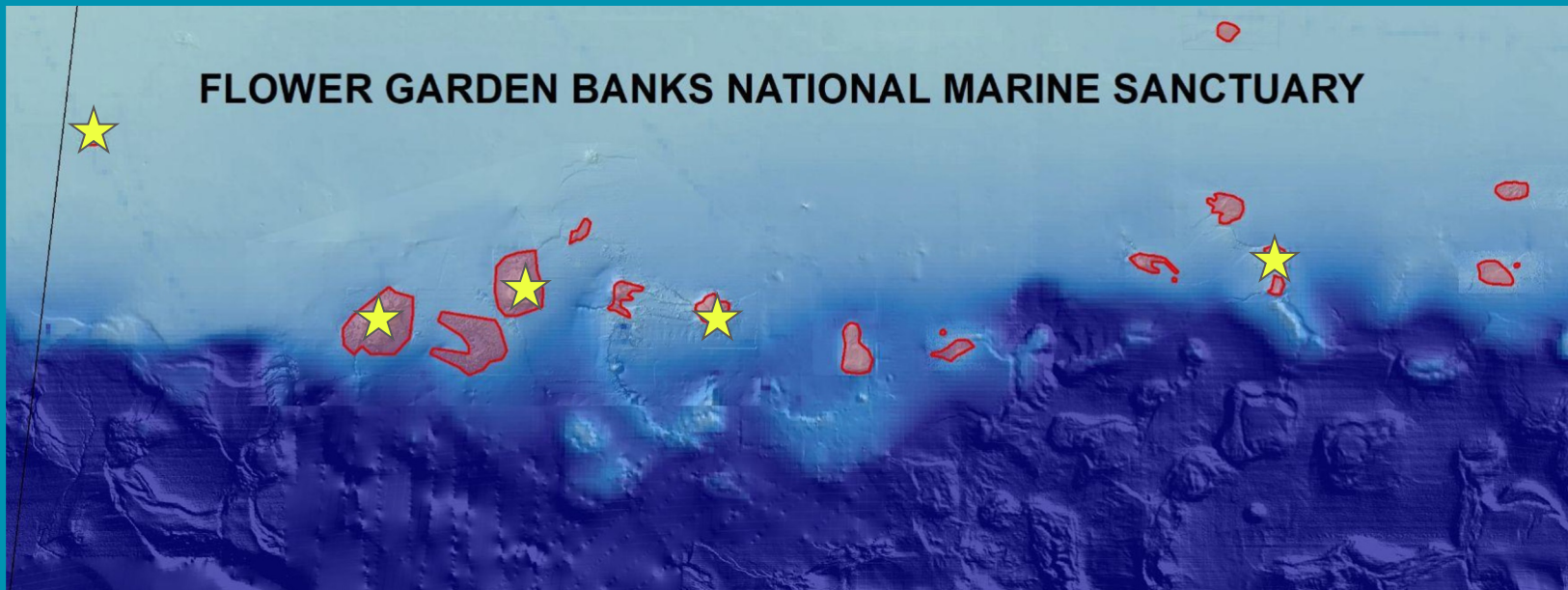


Flower Garden Banks National Marine Sanctuary
Mooring Buoy Assembly





Mooring Buoys





**NATIONAL MARINE
SANCTUARIES**