

Dr. Antonietta Quigg,
Regents Professor
Senior Associate Vice President for
Research and Graduate Studies

**WE ARE
AGGIES
BY THE SEA**

Mission: We are the future of innovation, education, service and communities of, for and by the sea.



DEPARTMENTS

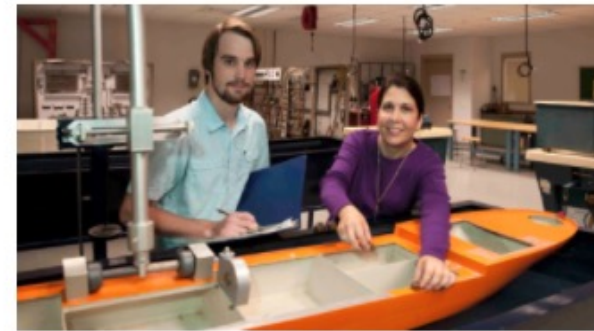
Computer Science and Engineering



Marine and Coastal Environmental Science



Maritime Business Administration



Ocean Engineering



Maritime Transportation



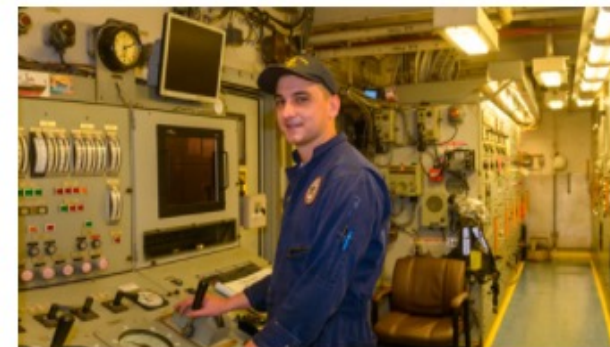
Foundational Sciences



Liberal Studies



Marine Biology



Marine Engineering Technology



New training ship

https://drive.google.com/drive/folders/1DCwvVLWO9iNt1qqfknt_2QVwjJMXN_dn

Major strategic areas



The “**Blue Economy**” concept, is an organizing principle that captures the interplay between economic, social, political and ecological sustainability of the ocean.

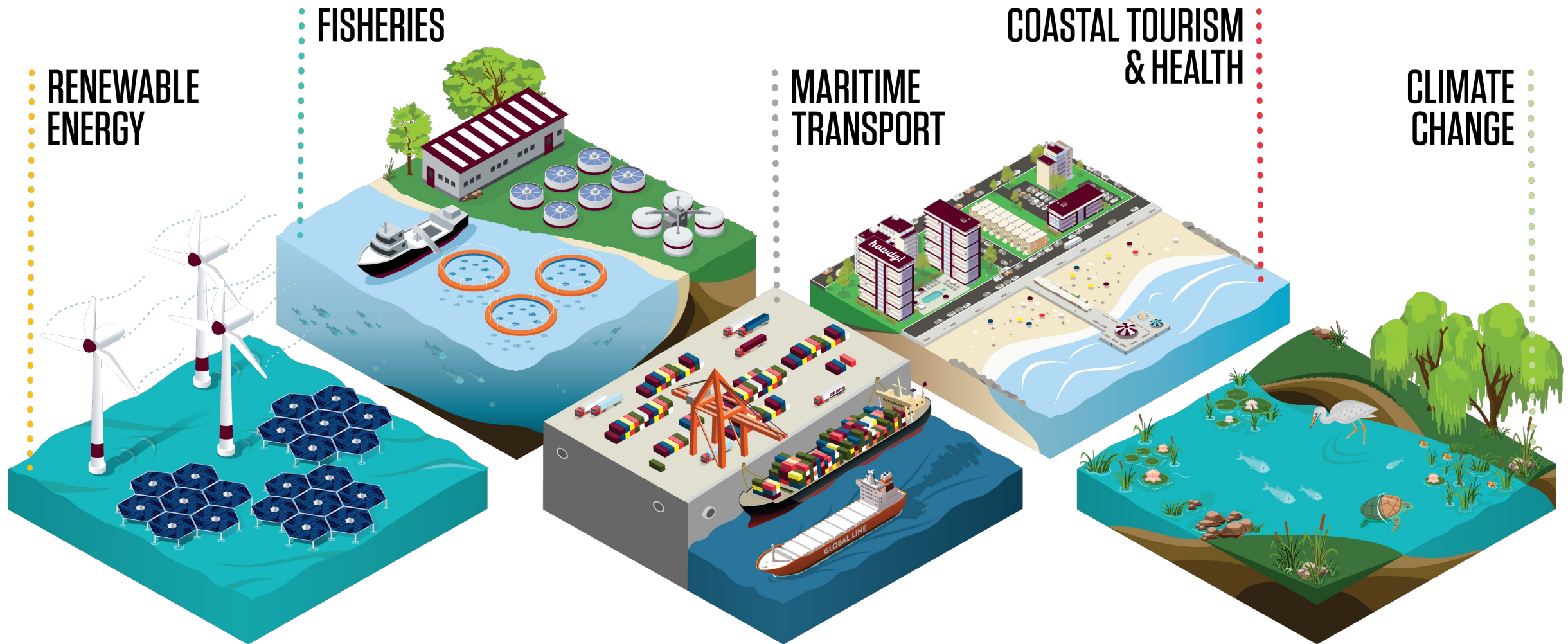
As a strong maritime nation with dominance in high tech expertise, the U.S. is well positioned to lead blue technologies in ocean activities.

Strategic Plan : 2020 - 2025



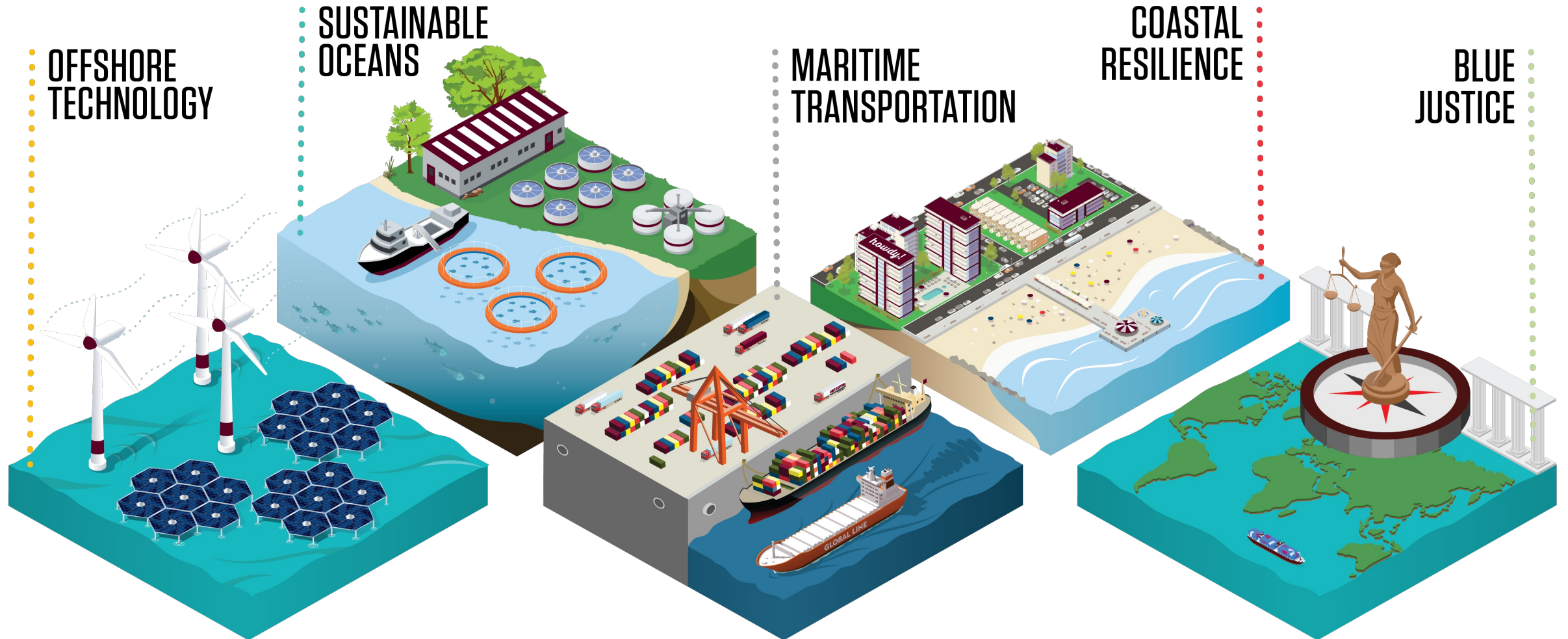
Texas A&M University at Galveston

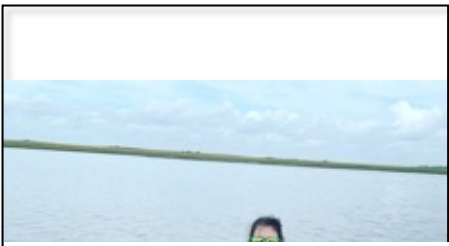
Leading the Blue Economy



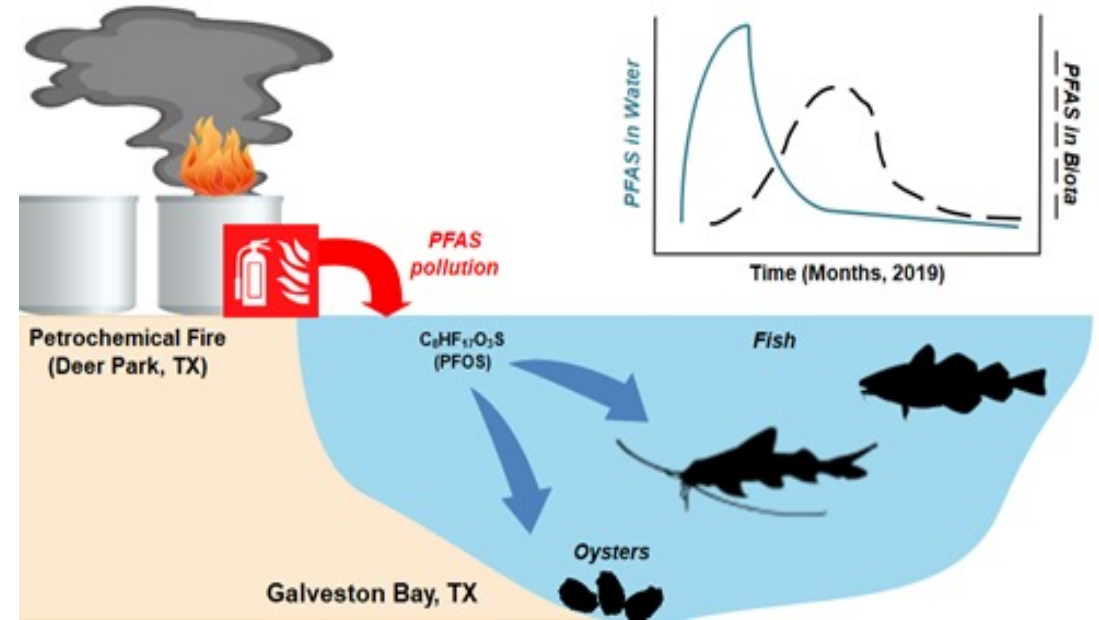
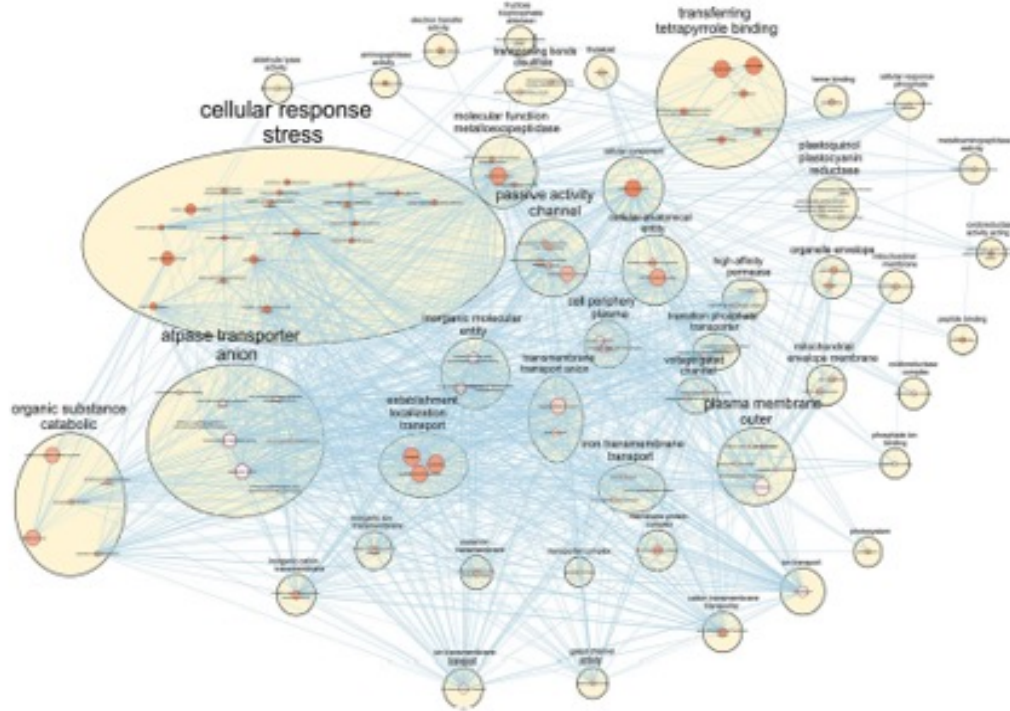
Texas A&M University at Galveston

Leading the NEW Blue Economy





Sustainable Oceans



Gulf Research Institute for Highly Migratory Species



1. Migration ecology of tarpon in the NW Gulf of Mexico
2. Origin and trans-Atlantic migrations of yellowfin tuna in the Atlantic Ocean
3. Habitat and ecosystem connectivity of fishes on natural banks in the Flower Garden Banks NMS
4. Movements and post-release survival and behavior of coastal sharks
5. Population connectivity of apex predators in Cuba-Mexico-US waters
6. Feeding ecology and environmental contaminants in top predators
7. Movement and population connectivity of greater amberjack
8. Bluefin tuna restoration



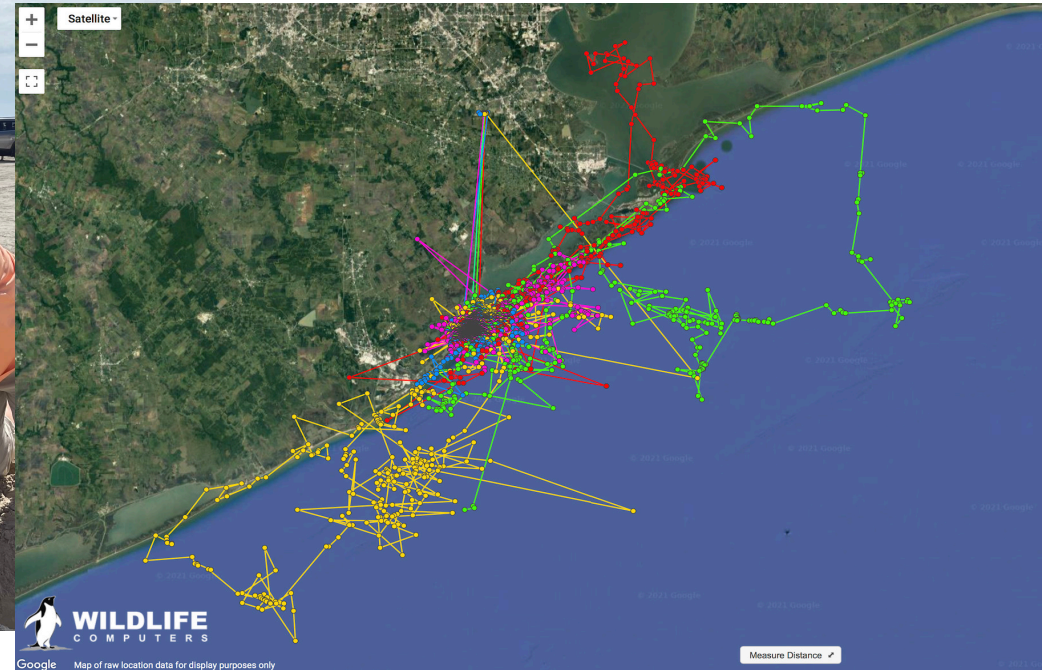
<https://www.tamug.edu/grihms/index.html>

Gulf Center for Sea Turtle Research

Assessment of Optimal Sea Turtle Nesting Sites Along the Texas Coast

In-Water Sea Turtle Capture and Tagging Program

Sea Turtle Health Assessments



<https://www.tamug.edu/GulfCenterforSeaTurtleResearch/>

Gulf Center for Sea Turtle Research

Sea Turtle Rehabilitation Hospital and Education Outreach Center



Coastal Resilience



Improve coastal
resiliency to
hurricanes and
storm surge



Better understand
the marine
pollution problem



Lead the study of
flood impacts on
natural and social
systems



Trace changes to
coastlines and
people in face of
climate change





INSTITUTE FOR A DISASTER RESILIENT TEXAS



1

Hazard Analytics

Measuring, Mapping, &
Managing Flood Risk

Funded By:
Texas General Land Office

2

Risk Communication & Perception

Buyers BeWhere

Funded By:
FEMA & TDEM

3

Policy & Decision Support

Texas' Enhanced State
Hazard Mitigation Plan

Funded By:
TDEM

4

Education

Partnerships for
International Research
& Education

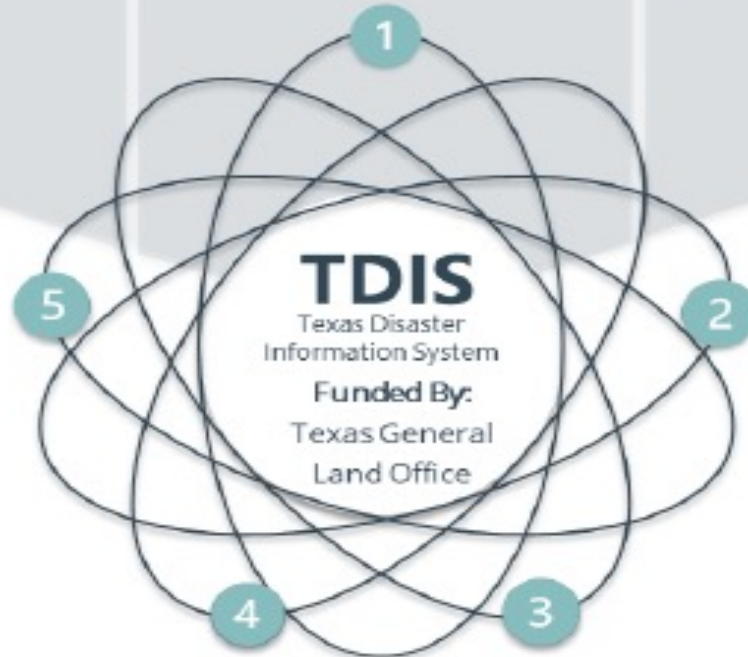
Funded By:
National Science Foundation

5

Coastal Risk Reduction

Ike Dike

Led By:
Center for Texas Beaches &
Shores



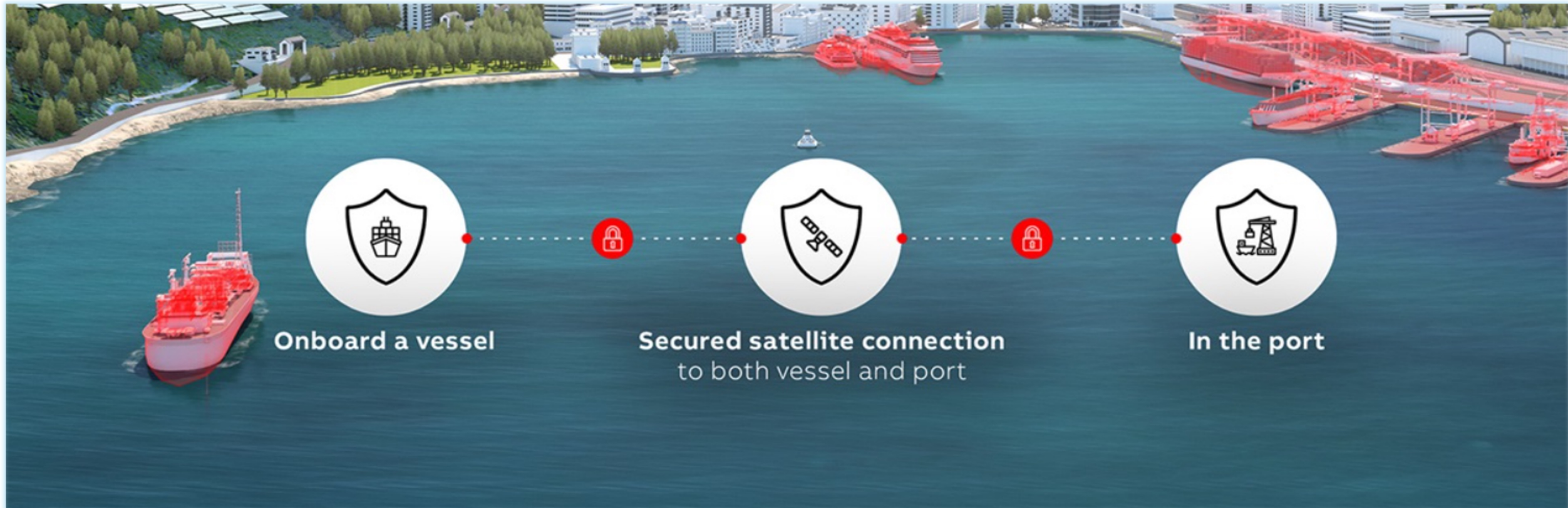
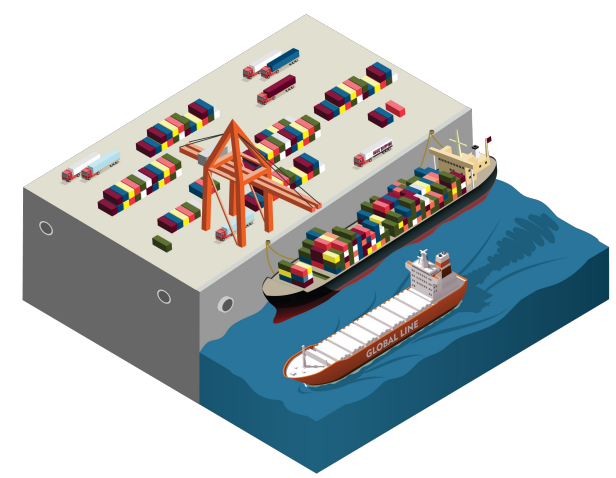
Established by the TAMU
Board of Regents following
passage of House Bill 2345,
86th Texas Legislature, 2019

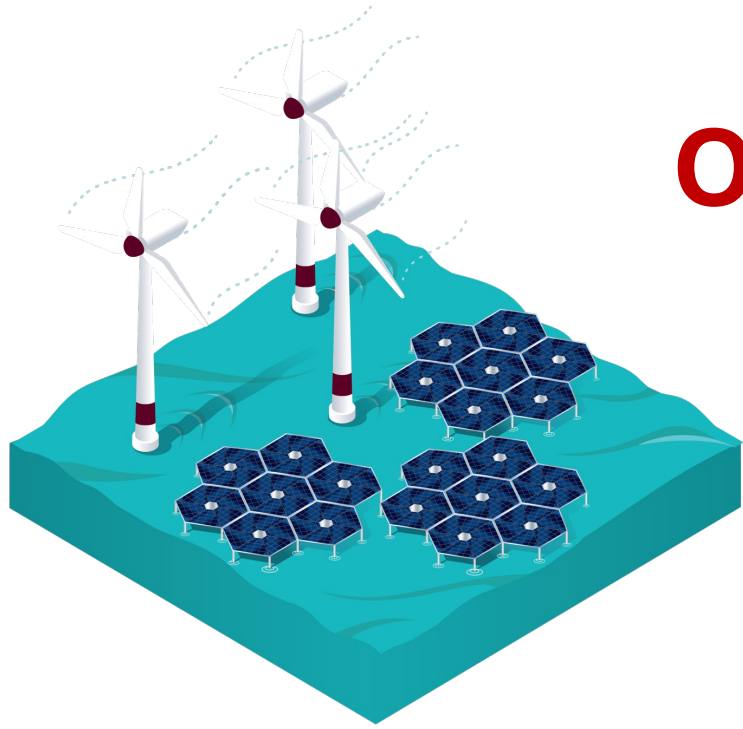
Maritime Transportation



- supply chains and logistics,
- security (cyber) of ports and vessels

Maritime Transportation





Offshore Technology

power at sea which includes green shipping, marine aquaculture, seawater mining, wind farms, etc.

<https://www.tamug.edu/cares/>

CARES
Clean & Resilient Energy Systems



Sustainability Takes Priority

Blue Justice

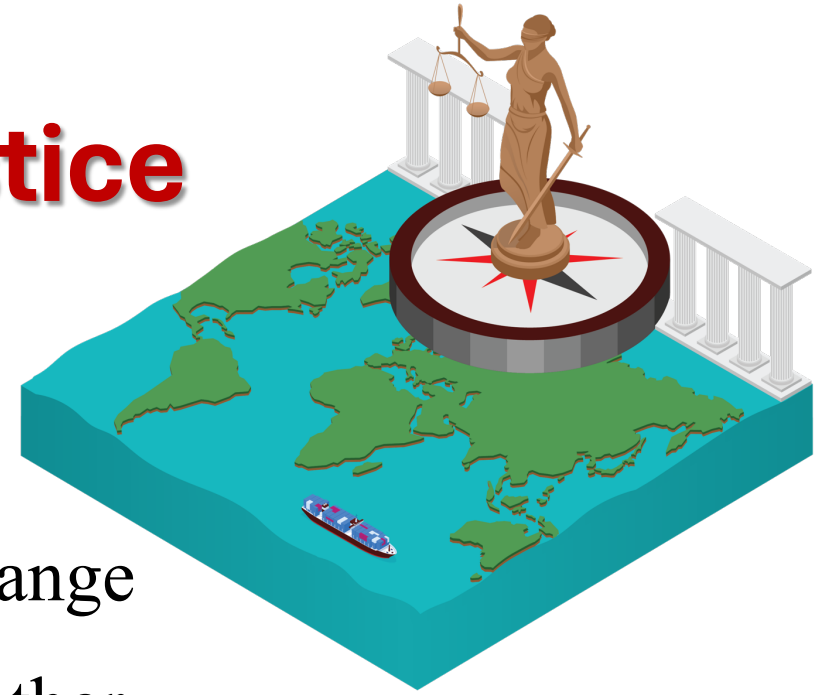
Overarching theme:
communities in transition

The need to build capacity and empower communities to participate in adapting to climate change

(1)Livelihoods - Focus on people & communities rather than on “economy”.

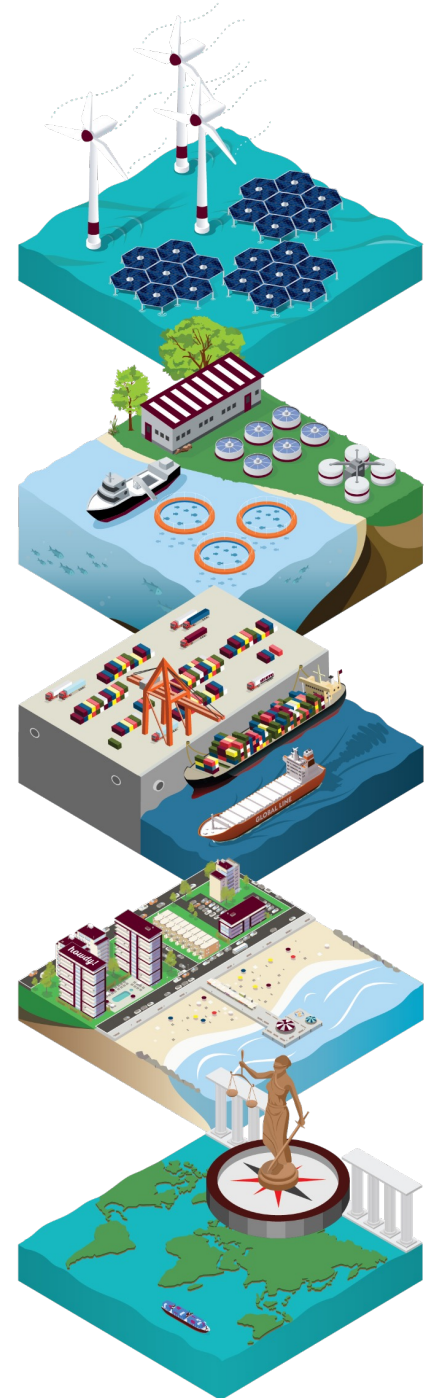
(2)Climate – Overlap with the *coastal resilience*, adaptation strategies and disaster management.

(3)Energy - infrastructure, energy security, social acceptance of renewables.



RESEARCH CHALLENGES

- ❖ Many junior faculty with little grantsmanship experience, few senior faculty and so a lack of mentoring to kick start these activities
- ❖ **NEW** Blue Economy offers great promise for the campus to lead in an arena, develop an identity and foster future generations of leaders amongst faculty and students



RESEARCH OPPORTUNITIES

What's "New" About the New Blue Economy?

Ocean
Economy



All economic activities related to the oceans, seas, and coastal regions.

<https://coastalscience.noaa.gov/science-areas/coastal-and-marine-planning/blue-economy-support/>

Blue
Economy

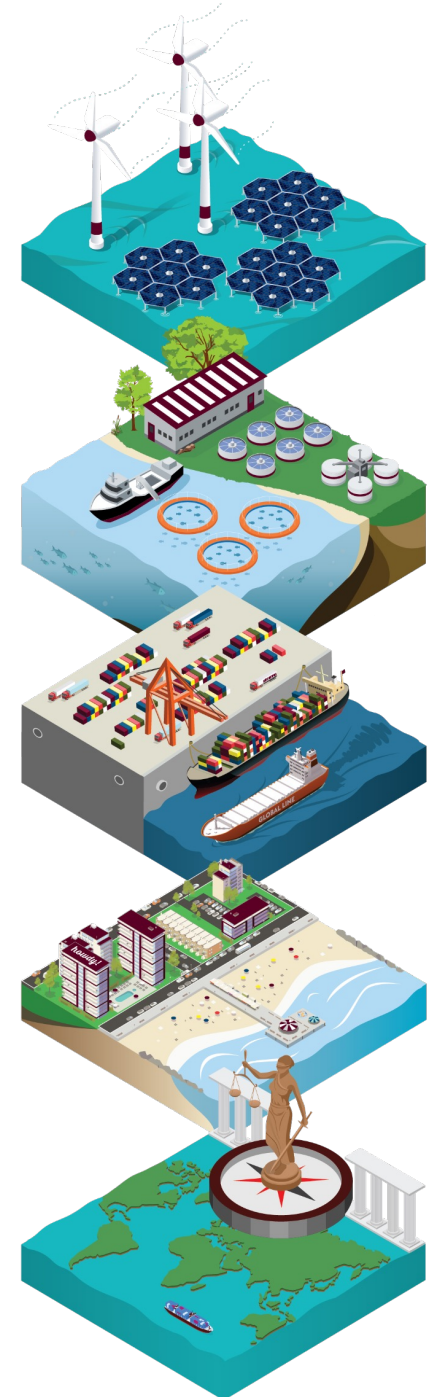


Couples the promotion of economic growth, social inclusion, and the improvements of lives and livelihoods, while ensuring environmental sustainability of the ocean and coastal areas.

New Blue
Economy



Uses **technology, data and information** to catalyze public and private sector innovation and inform smart decision making across all Blue Economy sectors.



What's next ??





Future of the Galveston Campus



Engineering Classroom & Research Building

Freshman Engineering Program,
Ocean Engineering,
Computer Science and Engineering,
Interdisciplinary Engineering,
Marine Engineering Technology



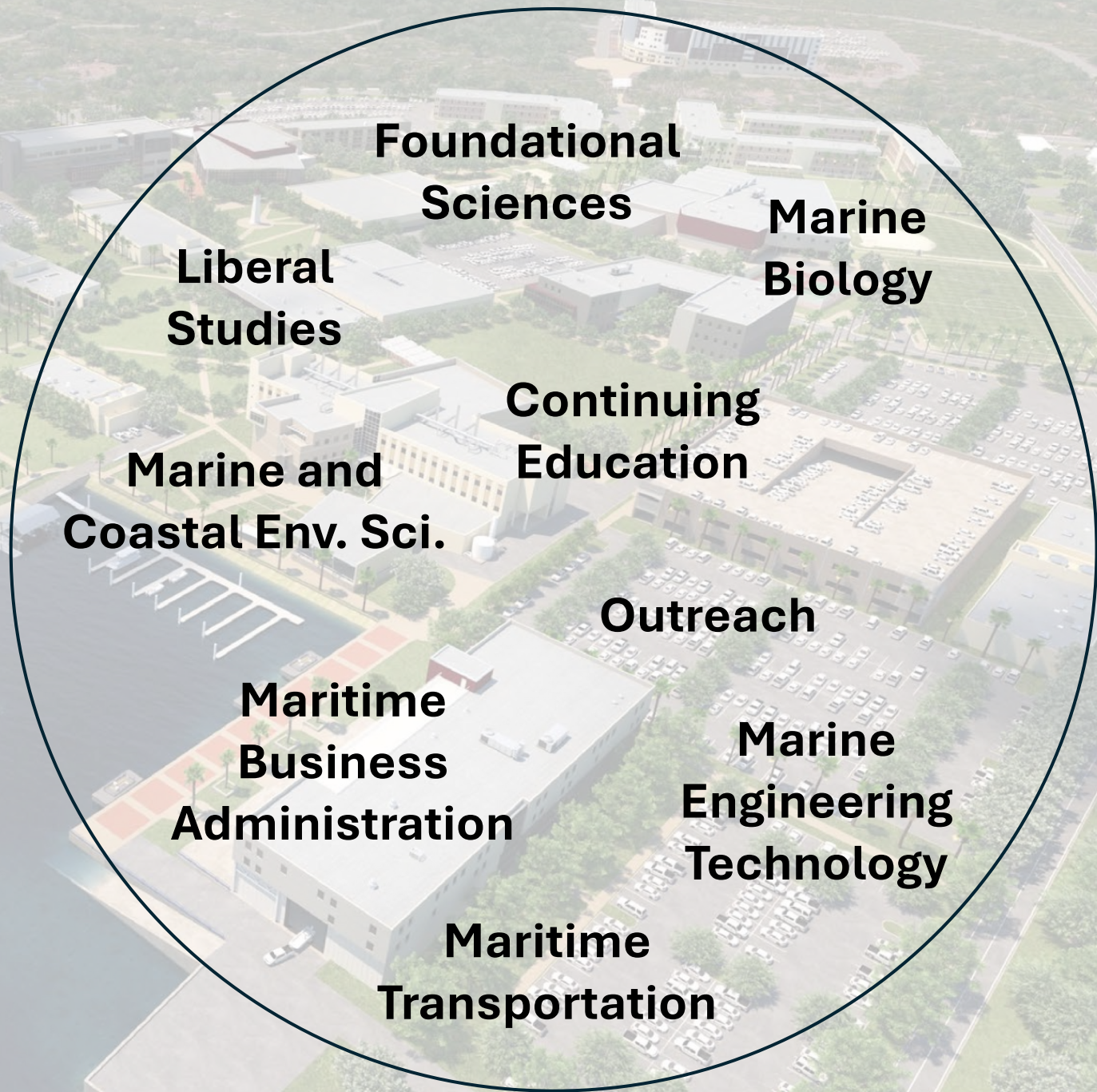
Creation of the....



TEXAS A&M UNIVERSITY

College of Marine Sciences
and Maritime Studies

College of Marine Sciences and Maritime Studies





College of Engineering

**Ocean
Engineering**

**Computer
Science and
Engineering**

**Entry to
a Major**





TEXAS A&M UNIVERSITY
GALVESTON CAMPUS

AGGIELAND

DOESN'T STOP AT
THE WATER'S **EDGE**